



LUXURY VINYL TILES

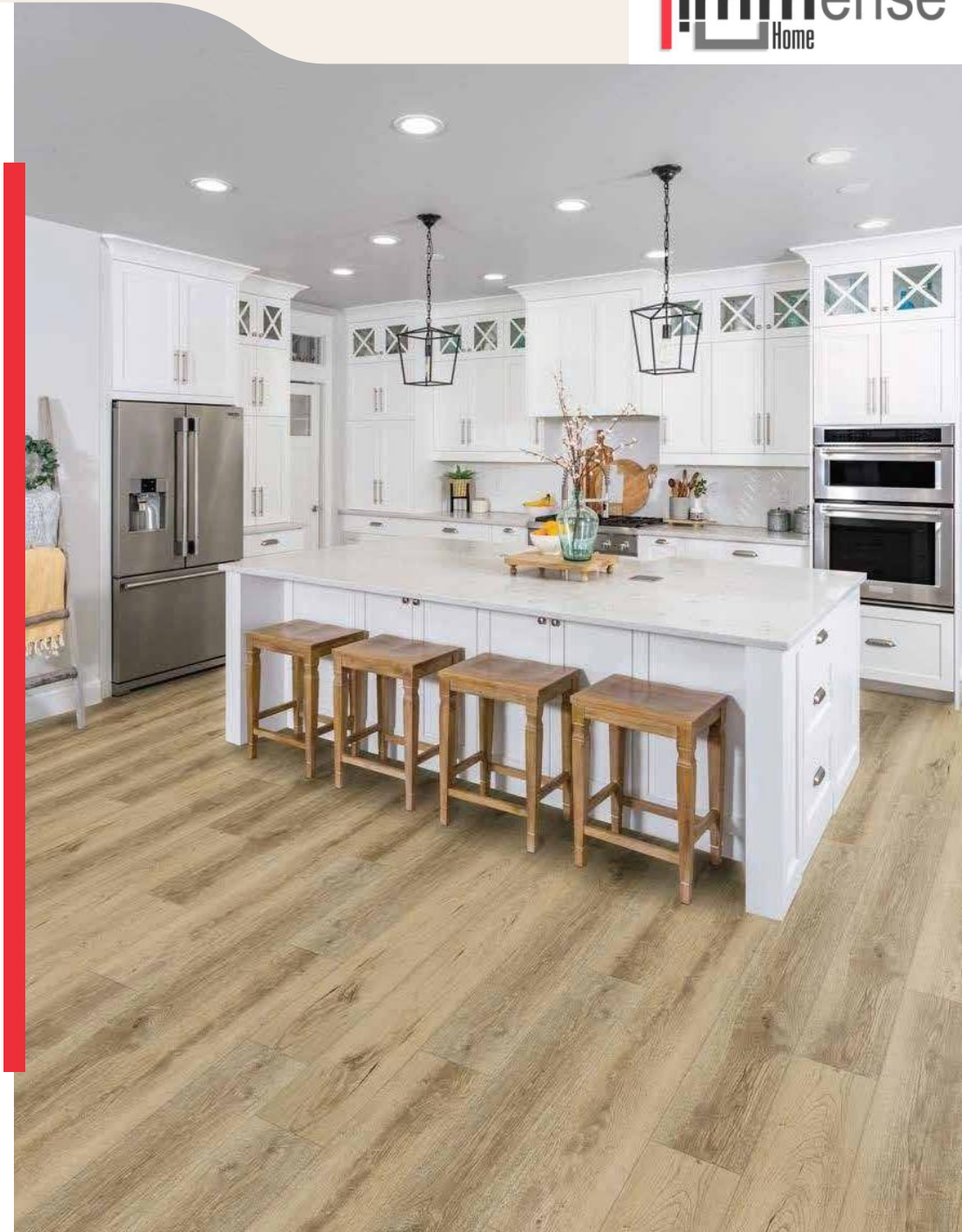
LVT PRODUCT CATALOG



PRODUCT SPECIFICATIONS

- **THICKNESS** – **2.0 mm & 3.0mm**
- **WEAR LAYER** – **0.5mm**
- **APPLICATION METHOD** – **Glue down**
- **SURFACE TEXTURE** – **Wood grain**
- **SURFACE TREATMENT** – **UV coating**
- **PLANK SIZE** - **6' X 36" | 1524mm X 914.4mm**
- **AREA OF 1.5 SQ.FT PER PLANK**

VISIT [Luxury Vinyl Tiles](#)





PRODUCT CHARACTERISTICS

- **WATERPROOF**
- **ANTI SLIP**
- **FIRE RETARDANT**
- **LIGHT WEIGHT**
- **QUIET AND SOFT UNDERFOOT**
- **SAFETY AND ENVIRONMENTAL FRIENDLY**
- **REALISTIC NATURAL WOOD DESIGNS**
- **SUPER WEAR RESISTANCE**
- **EASY AND QUICK INSTALLATION**
- **STRONG PRESSURE BEARING**
- **FLEXIBILITY**
- **EASY MAINTENANCE**

LVT 801



LVT 802



LVT 803



LVT 804



LVT 805



LVT 806



LVT 807



LVT 808



LVT 809



LVT 810



LVT 811



LVT 812



LVT 813



LVT 814



LVT 815



LVT 816



LVT 817



LVT 818



LVT 819



LVT 820



LVT 821



LVT 822



LVT 825



LVT 826



LVT 827



LVT 828



LVT 829



LVT 830



LVT 831



LVT 832



LVT 833



LVT 834



LVT 835



LVT 836



LVT 837



LVT 838



LVT 841



LVT 842



TILES

- **SIZE** - **300 x300 / 600 x600 / 450 x900**
- **THICKNESS** - **2mm**

LVT 823



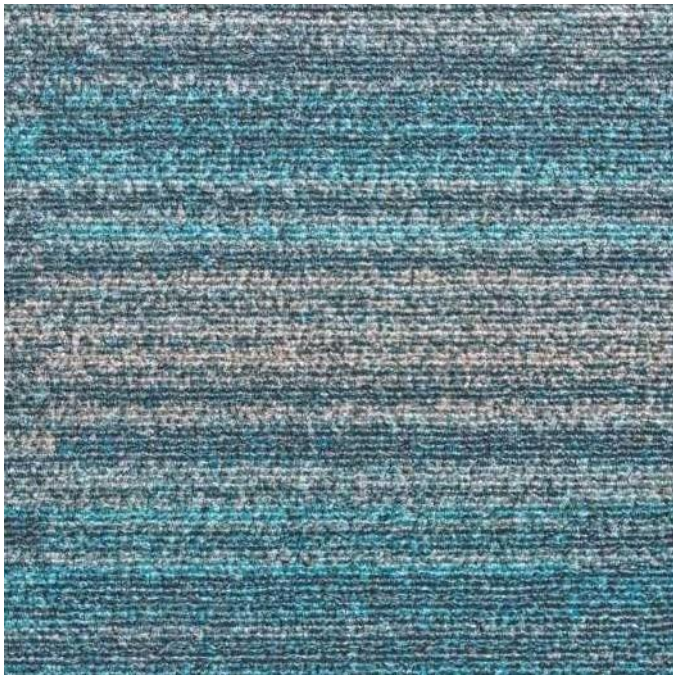
 **WARNING : Colours given as example and without obligation - shades will vary according to screen/printer settings.**



TILES

- **SIZE** - **300 x300 / 600 x600 / 450 x900**
- **THICKNESS** - **2mm**

LVT 824



 **WARNING : Colours given as example and without obligation - shades will vary according to screen/printer settings.**



TILES

- **SIZE** - **300 x300 / 600 x600 / 450 x900**
- **THICKNESS** - **2mm**

LVT 839



 **WARNING : Colours given as example and without obligation - shades will vary according to screen/printer settings.**



TILES

- **SIZE** - **300 x300 / 600 x600 / 450 x900**
- **THICKNESS** - **2mm**

LVT 840



 **WARNING : Colours given as example and without obligation - shades will vary according to screen/printer settings.**





Immense Home (PVT) LTD.

☎ 077 586 70 80

✉ Immensehomeprivatlimited@gmail.com